

# TOPIC OVERVIEW



Year Group: 4

Term: Autumn 1

Key Question: Why is Cornwall a Special Place?

## Creative:

Landscape painting  
Ukulele



## Healthy:

REAL PE  
Games- basketball  
Jigsaw PSHE lessons



## Active:

Action tables  
REAL PE  
Games- basketball  
Pendennis Castle visit



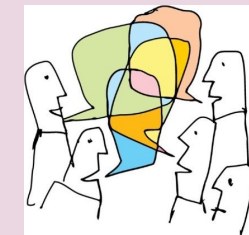
## Inspiring:

Artist study  
Pendennis Castle visit  
Ukulele  
Cornish tales



## Nurturing:

Jigsaw PSHE lessons  
Peer massage  
Castles oracy focus



## Writing

### Key Texts:

Cornish castle Tale of Fear  
The Mermaid of Zennor

Key Focus: See writing overview

Spelling- see RWI programme

### Reading: Key Texts:

Kensuke's Kingdom

Focus: VIPERS

## Maths:

Place value  
Addition and subtraction

## Geography

**Investigate places:** Physical land human characteristics of a location (Falmouth and Truro)

**Investigate patterns:** Name and locate equator, n. and s. hemisphere, the tropics, Arctic and Antarctic Circles and date time zones. Describe characteristics of these geographical areas.

**Use fieldwork-** Visit Pendennis Castle and make observations of mouth of the River Fal, why castle and town built there etc, Use 8 points of compass and 4 figure grid references

**Communicate geographically:** describe rivers and key aspects of physical geography

## History

### Cornish History study

Use a timeline. Link local history to national. Show factual knowledge of British history. Use evidence and evaluate different sources to build a picture.

Describe changes that have happened in the locality through history.

Visit Pendennis Castle

Taught through oracy

## Music

Learning to play and perform the ukulele with Cheryl Brendish.

## Art & Design

### Painting

Mix cool and warm tones in paint and associate with feelings, seasons.

Use watercolour paint to create washes for backgrounds.

Use different brush techniques.

Take inspiration from the work of Gary Hall—Cornish landscape artist

## Computing

Computer Systems and the Internet

Connecting networks

What is the internet made of?

Sharing information

Websites

Can I believe what I read?

## RE

What do Hindus believe God is like?

Hindu deities and how they help Hindus describe God. Links between stories including Diwali. Links between Hindu beliefs and how Hindus live, worship, believe in the value of people today.

## PE

Real PE- Unit 1- Co-ordination and Agility

Footwork Skills

Basketball

## PSHE

**Try new things Work Hard**

**Understand others**

Jigsaw PSHE—Being me in my world

Class team

Being school citizen

Rights and responsibilities- democracy

Rewards and consequences

Learning charter