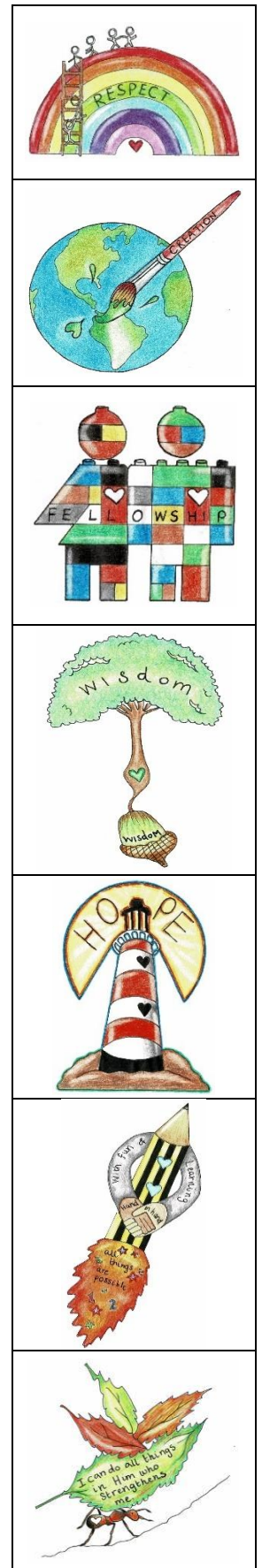




# Archbishop Benson C of E Primary School

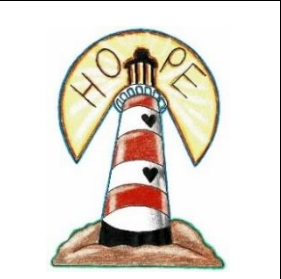
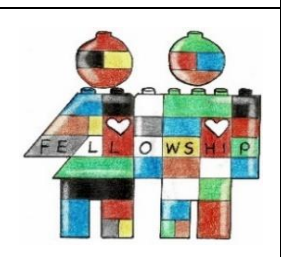


## School Prospectus for Early Years



## CONTENTS

<i>Welcome.....</i>	3
<i>ABB Prayer.....</i>	4
<i>SIAMS Report.....</i>	5
<i>General Procedures .....</i>	8
<i>Admission Policy.....</i>	10
<i>Free School Meals and Pupil Premiums .....</i>	11
<i>Pupil Welfare Group.....</i>	14
<i>Governing Body.....</i>	15
<i>My New School .....</i>	16
<i>Re-alignment of classes at the end of KS1 .....</i>	20
<i>Charging and Remissions Info for Parents.....</i>	22
<i>School Contact List.....</i>	24
<i>How we communicate with you - Frequently asked questions and answers.....</i>	25
<i>Map of the school.....</i>	27
<i>Sample Menu.....</i>	28
<i>School Uniform Overview.....</i>	29
<i>Benson Buddies Leaflet .....</i>	31
<i>Our PTA – FABB.....</i>	33



## WELCOME

Welcome to Archbishop Benson C. of E. Primary School. We hope that you and your child will enjoy being with us at the school. We pride ourselves on being a friendly and welcoming school that works hard to meet the needs of all our children. Our primary aim is to create a creative, inclusive but also ambitious learning environment, with an explicit Christian ethos where everyone is empowered and inspired to be successful.

Our fantastic staff team focus on making our school a safe and secure learning environment where children feel confident to try out new skills and to have a go even if they find it difficult.

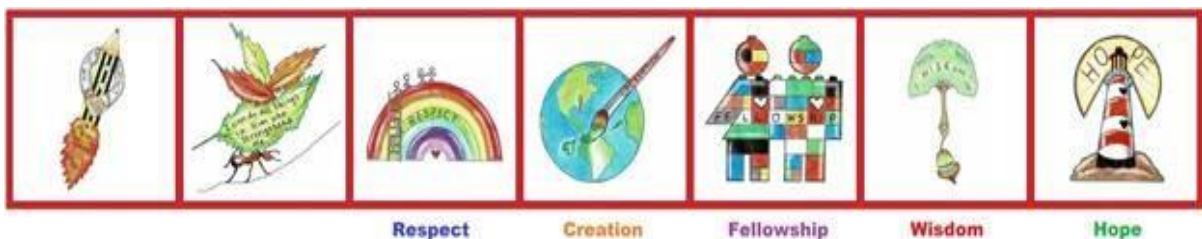
By the end of Year 6, your children leave our school ready and eager to face the excitement and challenges of the next phase of their education.

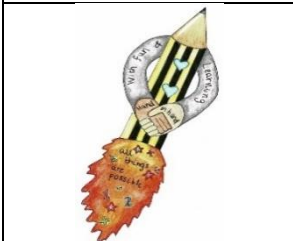
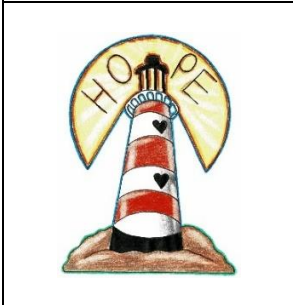
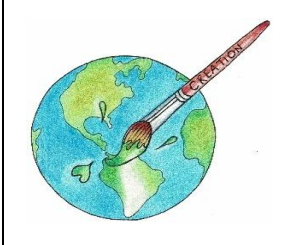
Whilst it is difficult to convey the unique atmosphere and spirit of our school in just a few transition sessions, we hope that you will be able to get a flavour of life and learning at Archbishop Benson CE Primary School.

We look forward to getting to know you and to developing a long and lasting relationship with you and your family.

Best wishes

Helen Giblett  
Head teacher





## ***Fun & Learning, Hand in Hand***



**Our school prayer reminds us that Jesus asks to be a friend to everyone, both inside & outside of the school.**

O Jesus,  
Friend of the friendless,  
Helper of the poor,  
Healer of the sick,  
Whose life was spent in doing good,  
Help us to follow in your footsteps.  
Make us strong to do right,  
Gentle with the weak,  
And kind to all who are in sorrow,  
That we may be like You  
Our Lord and Master.

**Amen**

## Statutory Inspection of Anglican and Methodist Schools (SIAMS) Report

Archbishop Benson Church of England School			
Address	Bodmin Road, Truro, Cornwall. TR1 1BN		
Date of inspection	28 February 2020	Status of school	Voluntary aided primary
Diocese	Truro	URN	137258

<b>Overall Judgement</b>	How effective is the school's distinctive Christian vision, established and promoted by leadership at all levels, in enabling pupils and adults to flourish?	<b>Grade</b>	<b>Excellent</b>
<b>Additional Judgements</b>	<b>The impact of collective worship</b>	<b>Grade</b>	<b>Excellent</b>
	<b>The effectiveness of religious education (RE)</b>	<b>Grade</b>	<b>Excellent</b>

### School context

Archbishop Benson is a primary school with 415 pupils on roll. The majority of pupils are of White British heritage. Few pupils speak English as an additional language. The proportion of pupils who are considered to be disadvantaged is in line with national averages. The proportion of pupils who have special educational needs and/or disabilities is above national averages. The school is part of the Truro and Roseland Learning community and Penair Partners' cluster with whom there are strong links.

### The school's Christian vision

With fun and learning, hand in hand, all things are possible.

'I can do all things through Him who strengthens me.' Philippians 3:13

Within our school family and beyond we have a calling to be witnesses to Christ in all that we do. We seek not to impose our faith but to offer it as a gift to all. We strive to live the teachings of Jesus, to grow towards full humanity through our relationship with God and others and to help transform lives.

### Key findings

- A distinctive Christian vision is well-established which informs and shapes the school's strategic direction and daily life. Pupils consistently attribute their excellent behaviour and respect for others to the vision.
- Leaders are passionate and dedicated about the work of this Church school. They create innovative approaches to meet the needs of all learners so that they can flourish. However, partnerships with global communities are less well developed.
- The vision is reflected in the school's creative provision for the care and support it offers for vulnerable pupils. This has a transformational impact on their lives and learning.
- Collective worship is the heartbeat of the school, enabling pupils to understand what the vision and values look like in daily life and the difference these can make. At present not all pupils have the opportunity to plan and lead worship.

### Areas for development

- Extend pupils' knowledge of the work of the Anglican Church worldwide so they deepen their understanding of how it addresses disadvantage and deprivation.
- Create an agreed progression of knowledge in order to enable pupils to develop a deeper understanding of key Christian concepts so they can achieve the higher levels of attainment.
- Extend opportunities for more pupils to plan and lead worship regularly so that they develop their sense of ownership in this area.

How effective is the school's distinctive Christian vision, established and promoted by leadership at all levels, in enabling pupils and adults to flourish?

### **Inspection findings**

Leaders astutely recognised the need to review the vision following significant changes to the local context. All members of the community shaped the vision so that they had genuine ownership. The vision is inspirational to driving the school's strategic direction and daily life. Improvements to the school's provision directly link to the vision, enabling pupils to flourish. Leaders confidently articulate an extensive understanding of biblical principles underpinning the vision and Christian values. They talk of sharing God's love, which staff perceive as their calling, enabling pupils to fulfil their God-given talents. Pupils explain that this is visibly shown by the red thread of God's love weaving across daily life. Within the school, each pupil is considered to be precious to God. Leaders are passionate and dedicated to the work of this Church school. They consistently seek to provide exciting new initiatives which enable all to flourish.

The vision inspires staff to create innovative approaches to meet the needs of all. Leaders make bold decisions to welcome pupils who have a high degree of needs or who need a second chance. A dedicated space, the Rainbow Cove, led by skilled staff, effectively meets the diverse needs of pupils and enables them to flourish. Working closely with special educational needs experts, the best practices are in place. This is having a transformational impact on pupils' lives and their self-esteem. Pupils make huge gains emotionally and socially, which they readily explain. The school's exceptional quality of inclusion is recognised by the local authority who identified the school to support a refugee family. This family shared information of their culture and faith with the school which deepened pupils' understanding of diversity. Staff go beyond expectations by their support. Innovative approaches to celebrating the termly Eucharist make this a rich experience. Pupils play a major role in this celebration, enabling them to see where Christian values are integral to this. They have a real understanding of the importance of this for Christians and feel it strengthens their sense of community. The depth and quality of pupils' spiritual reflections is impressive. High quality experiences are planned and woven across all subjects. Pupils have opportunities to respond to 'giant' questions which engage them in vibrant discussions. They confidently express their ideas which demonstrate a depth of thinking. This inspires pupils to take action about caring for God's world. Spiritual questions arise spontaneously and are explored enthusiastically. Pupils explain what spirituality means to them and why they find this valuable. Staff have agreed what spirituality could look like for each year group, so are proactive in enriching pupils' thinking. Pupils explain that they see the vision clearly in the exciting CHAIN curriculum. They say learning is fun with stand-out wow experiences. The curriculum is informed by key Christian values such as hope, which deepens the significance of these for them. Innovatively, learning provides experiences which inspire pupils to become advocates for change. Visits to the local foodbank and homeless shelter inspire pupils to action, raising awareness and leading class initiatives. This has created a rich culture where pupils passionately and independently take action. There are excellent examples of pupils challenging local companies and the National Trust.

Collective worship is the heartbeat of the school. Pupils develop a deep understanding of the vision and Christian values and what these look like in daily life. Pupils who profess no religious faith or a faith, confidently articulate the impact values make and how these shape their community. Pupils respond imaginatively to the Monday worship challenge. The importance of these ideas for pupils is deepened by cross curricular work. Pupils share their responses in the following Friday worship, offering rich possibilities of how each could respond. This enables pupils to understand how Christian principles can have a relevance for daily life. The depth of planning is exceptional. Teachers are excellently supported with resources to make class based worship varied and challenging. Pupils have a very well developed understanding of prayer and give numerous examples of where it helps them to share worries or be calm. The pupils Worship Buddies team play a major role, planning and leading worship, making suggestions for improvement. However, the possibility of leading worship is only open to this group.

Pupils talk about an enjoyment of learning, which they link strongly to the vision. There is a culture of high expectations which staff have developed through ongoing feedback. Pupils are confident to tackle the most difficult learning aims, which require the use of higher order thinking skills. The language of learning is well established, pupils might say, 'I can't do this yet', but plan how they can achieve this. Numerous opportunities for pupils to grow their talents in various areas stand out. These effectively raise pupils' self-belief. Standards in

attainment have risen and are now in line with national expectations. Pupils' progress is good, particularly in Key Stage 1. Vulnerable pupils are individually supported and make good progress from their starting points.

Influential partnerships with local schools allow excellent practice to be shared, notably the work on creative curriculum design. The diocese offers focused training which clearly influences work in RE. Local churches enrich worship through Open the book. Workshops allow pupils to explore the main Christian festivals in considerable depth, extending their significance. Pupils' knowledge of global communities comes from responses to current issues, such as supporting the relief efforts in Australia. There is a very well developed understanding of disadvantage and deprivation within the local area. However, it is not fully developed in relation to global communities. Governors are dedicated to their roles. Monitoring and evaluation is exceptionally detailed with prompts of what governors should be looking for. Governors' conference with pupils using prepared questions to evaluate the impact of what the vision means for them. This led to improving class reflection spaces so that they had a higher profile.

Pupils consistently attribute their impressive behaviour and relationships to the vision and Christian values. Pupils treat everyone with the dignity and respect. The established Fellowship Code gives strategies to deal with disagreements. These, alongside reflection and other approaches, enhance pupils' well-being.

Religious education offers stimulating opportunities to explore questions of meaning. Pupils are challenged and inspired by these discussions, reasoning through their ideas, listening and changing their thinking. Pupils make informed comparisons between a range of world faiths, showing a depth of insight. Whilst pupils' knowledge of religious vocabulary is advanced, they found it demanding to explain some of the key Christian concepts such as incarnation. The subject leader is enthusiastic and dedicated. He effectively shares his depth of knowledge of the Cornish RE programme, Curriculum Kernewak, with other schools.



**The effectiveness of RE is Excellent.**

The quality of feedback and support to staff by the RE subject leader is outstanding. Staff are given opportunities to develop their teaching through observing the excellent practice of colleagues. Teaching is at least good and rising, with examples of excellent practice. Standards are at least good and rising significantly. More pupils are now achieving the higher levels due to their knowledge of biblical stories. Assessment systems are robust. Staff judgements on attainment is secure, informed by examples which show expectations for each year group.

Headteacher	Helen Giblett
Inspector's name and number	Revd David Hatrey 844

## GENERAL PROCEDURES

The children are expected to be in full school uniform at all times. If a child is not wearing full uniform, then parents must send in a note informing the class teacher as to the reason why. A child can expect to be questioned by members of staff, if he/she is not in full uniform. All PE kit and swimming kit must come to school each Monday with every child. Children may not borrow kit from siblings or from children in other classes. This is both a health and safety issue and because borrowed kit is often lost and misplaced. PE kit will be sent home half-termly.

We expect all our pupils to have excellent punctuality and attendance records. Every child's punctuality and attendance are tracked on a daily basis. These figures are recorded on each child's End of Year Annual Report and become part of your child's permanent school record. These records are forwarded to secondary schools. We recognise that pupil attendance can be affected by illness and/or holiday but parents should note:

- The national average for pupil attendance is 95.5%. The school's average is 96.5%
- Ofsted judges any pupil attendance below 95% to be below average. 95% pupil attendance allows for a pupil to have around 7–8 days of absence in a year
- Pupil attendance below 90% is judged by Ofsted to be persistent absence

Poor punctuality and attendance figures are also monitored on a half-termly basis. Parents are sent letters of concern by the school and are invited to discuss the matter with the Head Teacher. The Head Teacher is obliged to refer cases of repeated poor punctuality and/or attendance to the EWO. According to government legislation, headteachers can only authorise pupil absence under exceptional circumstances. Parents are required to inform school by letter in advance of any planned absence from school regardless of the length of time. Please note that the headteacher has the right not to authorise a pupil absence, particularly if a child's attendance rate is 90% or below and is a cause of concern for the school.

We pride ourselves on the excellent behaviour and attitudes of our pupils. We have a long-standing record of high standards of behaviour within our school community. We have a very clear and supportive Behaviour for Learning Policy. Soon your child will be talking to you about rewards & incentives like the Class Behaviour Board, golden tickets and team points. Our children are aware that there are also consequences for poor behaviour. Mostly all it takes is a move down the Behaviour Board for a child to modify their behaviour but we operate a range of consequences to help pupils to moderate their own behaviour. If a child is experiencing behaviour problems within school, then we will notify parents directly and work with them to address the problem. Where poor pupil behaviour might occur after school at a club and is having a negative impact on the purpose of the club, then the school reserves the right to withdraw a child, temporarily or permanently, until such time as their behaviour is in line with school expectations,

Bullying is rare at our school. We believe this is because we maintain a strong anti-bullying focus every year. This year our anti-bullying theme has been **"We All Bee-Long!"**

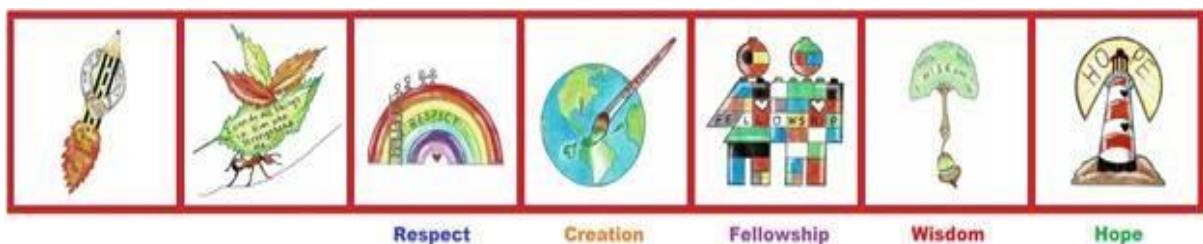
**We define bullying as when a person or group deliberately & repeatedly hurts you physically or hurts your feelings making you feel sad and scared.**

We cannot guarantee that it will never happen, but we can guarantee that any concerns raised by a child, parent or member of staff will always be dealt with thoroughly, fairly and professionally. Where there is evidence that bullying has taken place, the school will always take the appropriate action against any individuals or groups found to be involved.



This includes a range of sanctions up to and including exclusion. We will take immediate action to stop the bullying, step by step, using our Friendship/Anti-Bullying Code. We have high expectations regarding achievement and behaviour. Bullying and any form of prejudice or bias, including racism, are not part of the Archbishop Benson culture and will never be tolerated as such.

We do expect the children to show great care for school books, equipment and property and to ensure they are handled and stored safely to avoid any damage or loss. We understand that accidents do occur at school and at home. However, if a piece of equipment is intentionally damaged or a reading book is lost, then we expect parents to contribute towards the cost of a replacement item. You will be notified by letter and should send in the money in an envelope to the office. If a parent is unwilling to pay for a lost or damaged item then it could affect your child's future use of such resources.



## ADMISSIONS POLICY – RECEPTION CHILD

This form registers your interest in placing your child at Archbishop Benson School. It should be completed immediately and returned to the above address.

Archbishop Benson has a maximum of 436 pupils on roll (14 classes – 2 in each year group). The maximum number of children in any class is 32 in junior classes and 30 in infant classes.

In the year prior to your child reaching his/her 5<sup>th</sup> birthday you will be sent a standard County Council application form. If you do not receive one by October please notify us. This form must be completed and returned to Cornwall Council by 15 January at the latest. You can also apply to the Council online via their website.

The Archbishop Benson form should be returned to the school along with any supporting Church letter which will be kept on file. This is purely for our records, applications **MUST** be made to Cornwall Council as well.

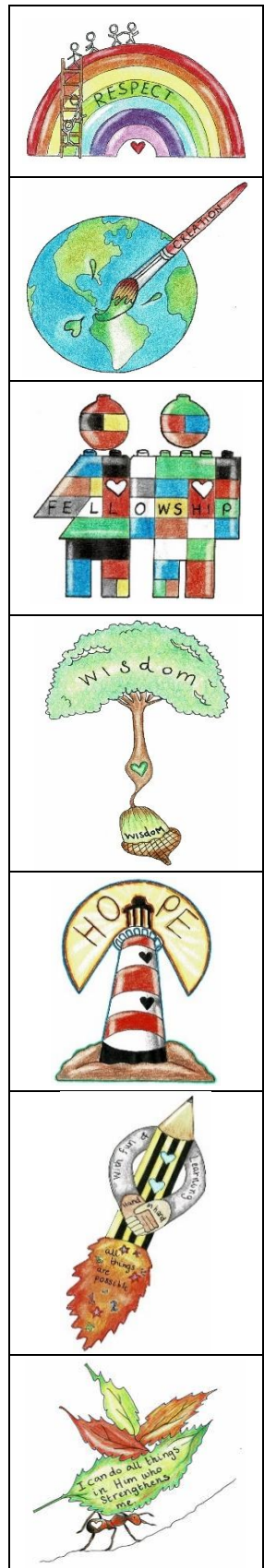
The Governing Body's Admission Committee will consider all applications in February. By the middle to end of March you will be informed if your child has been successful in gaining a place for the following academic year.

If parents apply for a place in the Reception year after others who applied earlier have been notified, it is unlikely that there will be a place available. If, however, places do become available, the over-subscription criteria will be followed:

1. Children who are 'Looked After' by the Local Authority
2. Siblings\* of pupils who will be attending the school at the proposed date of admission
3. Children of practising Christians – Anglicans or other denominations – within the Deanery, for whom this is the nearest Church of England Voluntary Aided School, supported by a letter from the parish priest/minister
4. Children of families of other world faiths, supported by a letter from their religious leader
5. Other children within the Deanery of Powder
6. Children living closest to the school – Priority will be given to those whose home (main residence) is nearest to the school (measured as the crow flies) from the home's front door to the school main gate using a Geographical Information System

In any tie-break situation, distance from the school will be the deciding factor. Distance will be measured (as the crow flies) from the home's (main residence) front door to the school main gate using a Geographical Information System.

(\* A sibling is deemed to be a brother, sister, half-brother or half-sister, step-brother or step-sister or child living in the same household).



## FREE SCHOOL MEALS AND PUPIL PREMIUM

Did you know just by registering your child for Free School Meals means that your child's school gets extra money?

Register now to make sure we don't miss out.

From September 2014, all Key Stage 1 children (Reception, Year 1 & Year 2) are eligible to receive free school meals. **However regardless of whatever year group your child is in**, if you are in receipt

of one or more of the benefits listed below and you do not receive Working Tax Credits, then Archbishop Benson School could benefit from additional Pupil Premium funding to support your child just by filling in the application form even if you have already registered for free school meals in the past.

### Qualifying Benefits

- Income Support
- Income-Based Jobseeker's Allowance (not Contribution Based)
- Income-Related Employment & Support Allowance (not Contribution Based)
- Child Tax Credit (CTC) with an annual income (as shown on your award letter from the Inland Revenue – TC602) of no more than £16,190.
- Guarantee element of State Pension Credit
- Support via Part VI of the Immigration & Asylum Act 1999 (IAA)

**Please note, if you are in receipt of Working Tax Credit, you do not qualify for Free School Meals, even if your annual income is below £16,190**

If you are eligible for free school meals **in any year group or even if your child already receives a universal free school meal in Key Stage 1**, it is still **very important** to sign up, as registering could also raise an extra **£1300 per registered child** for Archbishop Benson School from central government to fund valuable support like intervention programmes, small group support, new resources and enrichment opportunities.

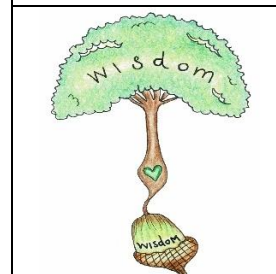
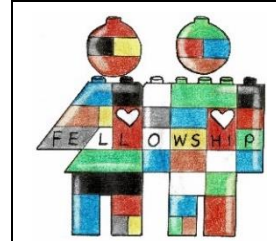
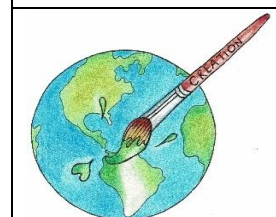
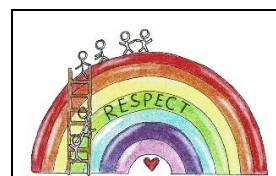
- ❖ If you want your child to have a free healthy meal at lunchtime that is great – they will get a free meal (saving you more than £350 a year) as well as extra benefits and the school gets the **extra £1300 per child**.
- ❖ If you don't want your child to have the school meals they can continue as normal - as long as you qualify and are registered, the school still gets the **extra £1300 per child**. By registering you make sure that your child and others in their class don't miss out.

### How does it work?

- I. First, check if you qualify – it is not just if you are unemployed, so please look at the list on the next page or visit the Cornwall website at [www.cornwall.gov.uk/schoolmeals](http://www.cornwall.gov.uk/schoolmeals). Registration is confidential and it will not affect any other benefits you are claiming.
- II. If you are unsure, contact the School Meals Team on 01872 323298 or email [schoolmeals@cornwall.gov.uk](mailto:schoolmeals@cornwall.gov.uk). The team will be able to check your entitlement to claim. Please complete the online form:

<https://www.cornwall.gov.uk/education-and-learning/schools-and-colleges/school-meals/application-for-free-school-meals-and-pupil-premium/>.

For more information, please speak to Mrs Law, Office Manager or Mrs Lang School Secretary. Come and talk to us if you're not sure, we would be more than happy to assist you.



## How do I apply?

If you are in receipt of any of the benefits stated you can make a claim for free school meals. Applying through the 'Citizen Portal' is the quickest and easiest way to apply and will result in you getting an instant decision. The quick link is available on the school's website or visit <https://www.cornwall.gov.uk/education-and-learning/schools-and-colleges/school-meals/application-for-free-school-meals-and-pupil-premium/>

Alternatively, call the Education Helpline on 020 8987 6212 or 08000 562 561

Once you have made a successful claim your child will continue to receive Pupil Premium funding for the rest of the time they are in Primary school.

An application can be made by any responsible adult who is involved in the care of the child. If you would like help with applying then please speak to the school office who will be happy to help.

**Please note** all children in Foundation Stage, Year 1 and 2 automatically receive 'Universal Infant Free School' meals but this is **NOT** part of Pupil Premium. To ensure your child's school receives this additional funding to support learning you must apply for Free School Meals as stated within this leaflet.

## Our school aims:

- Enable each child to achieve their full potential in levels of academic maturity, creativity, spirituality, physical development and independence
- Educate pupils in the principles of the Christian faith, promoting respect for moral values, differing races, religions and ways of life
- Awaken and develop every child's sense of self worth
- Develop respect, commitment and responsibility for others, to equip children to be able to make a positive contribution to the community in which they live
- Provide a wide variety of activities, visits and special events which enrich children's learning



Archbishop Benson C of E Primary School,  
Bodmin Road  
Cornwall  
TR1 1BN  
01872 273185  
office@archbishop-benson.com wall.sch.uk or  
secretary@archbishop-benson.com wall.sch.uk



Ensuring all our children  
get the best education  
they are entitled to

**A parent's guide to  
Pupil Premium  
2020-2021**



### **What is the Pupil Premium?**

Pupil Premium is additional funding, that central government provides to schools in England to ensure all children, regardless of their social or economic circumstances, get the best education possible to ensure they make good progress and achieve age related expectations or better.

### **How much extra funding does the school receive?**

This year schools will receive:

- £1,345 for each pupil eligible for free school meals or previously eligible, from Reception to Year 6
- £2,345 for each pupil identified as being in care
- £310 for each pupil who is identified as service families

### **How does the school use this extra funding?**

It is a legal requirement for schools to show how their Pupil Premium money is spent and this report is available on our website. Schools do not report about individual pupils but identify needs across the school and how the PPG money is spent to support the specific context of the school. As well as using the money to ensure the highest quality teaching for all children it also funds specialist interventions and support programmes for children that require extra provision to reach their educational milestones. The school is always happy to discuss parents opinions and ideas about specific support.

### **Who is eligible for Pupil Premium?**

Service children, children looked after by the state and any child who is eligible for free school meals are entitled to Pupil Premium funding for their school.

A child is entitled to free school meals if their parents receive one or more of the following benefits:

- Universal Credit (provided you have an annual net earned income of no more than £7,400)
- Income support
- Income-based Jobseekers Allowance
- Income- related Employment and Support Allowance
- Support under Part VI of the immigration and Asylum Act 1999
- The guarantee element of pension Credit
- Child Tax Credit (provided you are NOT also entitled to Working Tax Credit and have an annual gross income of no more than £16,190)
- Working Tax Credit run -on -paid for four weeks after you stop qualifying for Working Tax Credit

### **Our Incentive Package**

We want all families at Archbishop Benson C of E Primary School, whose child/children are eligible for Pupil Premium money to sign up. To encourage this we have created an incentive package that will support your child throughout their time with us:

#### **All PP Pupils will receive:**

Free School Meals whilst your child receives the PP funding (this is different to universal free school meals for EYFS and KS1 pupils)

#### **Service Children:**

Children with parents in the Services can receive financial discount for additional support for Emotional Well-Being.

#### **All other PP pupils including 'looked after pupils and previously looked after pupils' will receive:**

#### **Year R / Year 1 / Year 2**

The school will provide a replacement book bag x 1  
water bottle x 1

#### **Year 3 / Year 4**

Swimming Paid

#### **Year 4**

Up to 50% discount for the Year 4 residential

#### **Year 6**


Up to 50% discount for the Year 6

## PUPIL WELFARE

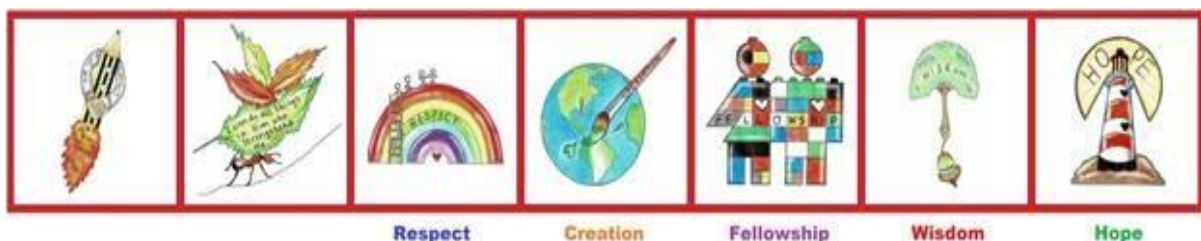
One of the key factors in maintaining our high standards of pupil welfare & safeguarding is our **Pupil Welfare Group (PWG)**. This group meets on a weekly basis to discuss a wide range of pupil welfare issues. This group consists of Mrs Giblett, Mrs Williams, Mrs Morris and Mrs Truen who, between us all, have a wealth of experience and expertise in supporting children and families.

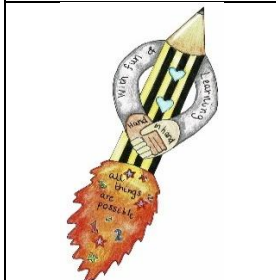
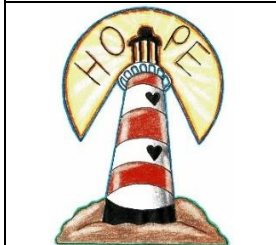
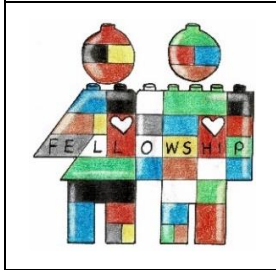
All these members of staff are available to meet with any parent or carer who may have a welfare concern of any kind. We pride ourselves on being approachable and are happy to discuss any concern with parents, no matter how big or small.

We would also like to remind you that your child's class teacher is always available to speak with you about any concerns and the teacher can, with your agreement, then share this information with the PWG

PUPIL WELFARE GROUP		
<b>Hrs H Giblett</b>	Designated Safeguarding Lead	
<b>Mr D Galler</b>	Deputy Designated Safeguarding Lead	
<b>Mrs Truen</b>	Family Support Coordinator	
<b>Mrs J Williams</b>	Special Educational Needs	
<b>Mrs B Morris</b>	coordinators	
<b>Mrs H Taylor-Browning</b>	EYFS (YR) Lead Y1 Phase Leader	
<b>Mr J Kitto</b>	Y2/3 Phase Leader	
<b>Mrs J Barnard</b>	Y4/5/6 Phase Leader	

We work in partnership with parents to help your child to achieve their full potential. If we have any concerns as to a child's welfare, we will endeavour to be as open and honest with you as we possibly can and to meet with you to discuss the matter. We would ask that parents do not take offence if we have to contact them to discuss a potentially sensitive or challenging issue e.g. to discuss diet/nutrition/sleep concerns, to address concerns over a child's social or emotional well-being. Our primary focus is only ever the health and welfare of your child and we will always seek to work proactively and supportively with parents to address potential welfare issues.





## GOVERNING BODY

All schools in England have a Governing Board which is responsible for overseeing many of the strategic decisions of the school. A key role is to act as a critical friend: to support, to challenge, to ask questions, ultimately to represent the school community. The Governing Board works in close partnership with the Headteacher, staff, the Diocese and the Local Authority. Whilst the Headteacher is, of course, responsible for the day to day running of the school, the governors are involved with such things as staffing, curriculum, school buildings and finance. It ensures the school functions well and maintains the proper range of academic and social objectives.

The Governing Body consists of appointed governors who meet at least twice each term; additionally there are key focus groups which meet more frequently:  
Our current Governing Body:

Mrs Mandy Hoare (Chair), Mrs Karen Standen (Vice Chairman)  
Mrs Helen Giblett (Head Teacher), Mrs Amanda Colwill, Mrs Jenny Webster, Mrs Melanie Rowson, Mr Matt Williams, Mr Euan Beattie, Mr Julian Roberts, Dean Roger Bush, Mrs Melissa Thorpe, Mr Miles Topham, Mrs Georgina Miner  
Mr Michael Williams (Clerk – [clerk@archbishop-benson.cornwall.sch.uk](mailto:clerk@archbishop-benson.cornwall.sch.uk))

### The Governing Board operates the following committees:

- Business and Finance
- Admissions
- Quality of Education
- Appeals Panel
- Governor Focus Groups also include: Personal Development, Behaviour and Attitudes, Christian Ethos, Worship & SMSC, Effectiveness of Leadership and Management

### Friends of Archbishop Benson

Welcome to the home of the Friends of Archbishop Benson, FABB. Throughout the school year, FABB arranges many events which raise large sums of money for our school. Last year, over £10,000 was raised through events such as both the Christmas and Summer Fairs, termly school discos, regular coffee mornings, including our very special Mothers Day Coffee Morning and family BBQs and picnics.

ALL of the money raised is spent on the children, purchasing extra items which enhance their education that the school would otherwise be unable to have. Recent examples of how the money has been spent are: new play equipment, classroom desks, large TV screens in the main hall, Covered area for year 1 and educational programmes.

However, FABB is not just about raising money. We aim to take a supportive role in all school events such as the magnificent productions they stage, often serving teas and coffees and helping with raffles etc. Anybody is welcome to attend our meetings which are held termly in the school staff room at 7pm.

Mrs Emma Potter (Chairman – [chair.fabb@gmail.com](mailto:chair.fabb@gmail.com))

# My New School...

# Archbishop Benson

My new teachers are:

**Mrs Taylor-Browning** (on maternity)  
**Miss Palmer and Mr Jenkin**

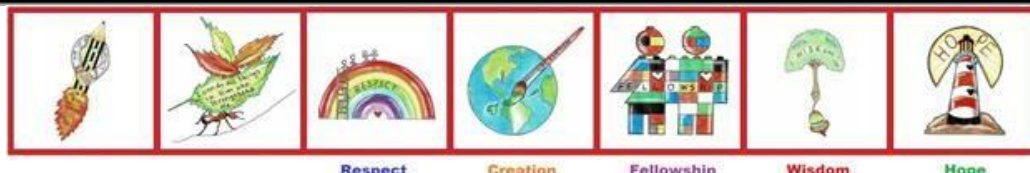
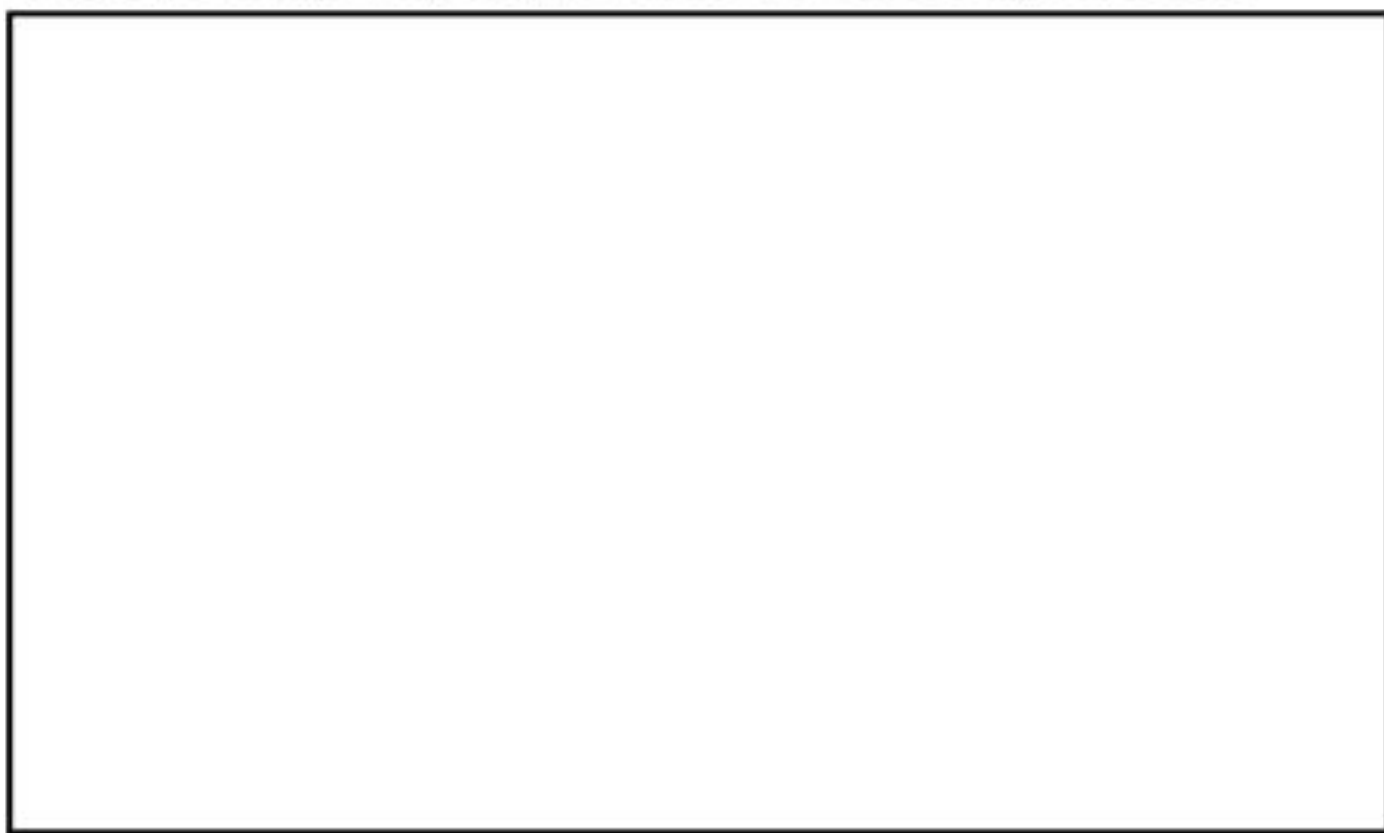
There are other people who will help me learn:

**Mrs Underhill**    **Mrs Keaney**



I will meet them before I start school so I know it will be fine. They know all about me and how to help me.

Here is a drawing of me, ready to find out more about my new school.



Respect

Creation

Fellowship

Wisdom

Hope



This is the way I will go into my class in September when I start school.



This is the outdoor space where I can learn through play.





Some of the areas inside where I will learn through play.





I can learn to mark-make and write in all of the learning areas at my new school.

We will have the opportunity to create an RE floor book as a year group, to show what we have been learning.



I can use feelings pebbles and a worry monster to help me express how I feel.



I can be creative, expressive, imaginative, and learn to plan and design at my new school.



## RE-ALIGNMENT OF CLASSES AT THE END OF KS1

Archbishop Benson Primary School is a two-form entry school. This means that we admit two classes of 30 Reception pupils every year. When we admit our 60 new Reception every year, we do our utmost to ensure that the distribution of pupils between the two Reception classes is as balanced as possible. We endeavour to secure as much pupil information as possible from pre-schools and from home but there are a number of factors that can affect how well we know our Reception pupils before they join us e.g.

- Our Reception pupils can come from up to 10 different pre-school settings and the amount of transition information that we get from these settings can vary hugely
- Between 5-10% of our Reception cohort (3-6 pupils) may have little or no pre-school experience at all and therefore information on their abilities and on their needs can be very limited.

As our Reception classes move through YR, Y1 & Y2, they develop, mature & change in lots of ways – many of which we could not have predicted when we made the original class allocations. There are lots of factors that affect a child's development including physical & mental health needs, special educational needs, pupil welfare issues, changes in family circumstances. Alongside this, between Reception and Year 2 each class has new pupils joining as others leave.

A combination of any or all the factors mentioned above within a class can have an impact on the balance of relationships and on the quality of learning that takes place. Although these factors occur in all classes in all schools, most schools are not as big as we are & therefore are not in a position to be as proactive about it

Therefore we use the move from the Infants into the Juniors as a natural opportunity to re-align the pupils within the two classes before they move up to Year 3 for the next four years of their learning journey. Our Year 2 pupils are well used to working & learning successfully across the 2 classes and therefore they easily adapt to the revised classes. We know that the children can cope with working across classes because there are lots of examples this year, and in previous years, of Year 2 already working & learning successfully across the 2 classes e.g. class trips, sports activities, swimming, outdoor learning opportunities and Family Learning. We also ensure that there are additional transition opportunities for the Y2 children in the second half of the Summer term e.g. a pirate picnic, sporting activities, craft activities and paired reading.

The planning for the re-allocation of the Y2 pupils will begin early in the Summer term.)

- Factors, like a balance within each of the new Y3 classes of gender, ability, individual needs, English as an Additional Language and pupil premium eligibility, will be considered.
- Existing friendships & relationships will also be considered
- There will be input from the children - we will explain it to the classes and we can use activities like Circle of Friends to establish who the children like/choose to play with daily/regularly both within & beyond the class.
- We will also consult with parents too.

We appreciate that change can be unsettling. However, we also know that there are many positive outcomes to the re-allocation of Year 2 children

- We can maximise the learning potential of both classes at a key point in their learning journey through the school
- We can support them in developing valuable life skills e.g. managing change, developing resilience
- The children can build new relationships & widen their social parameters

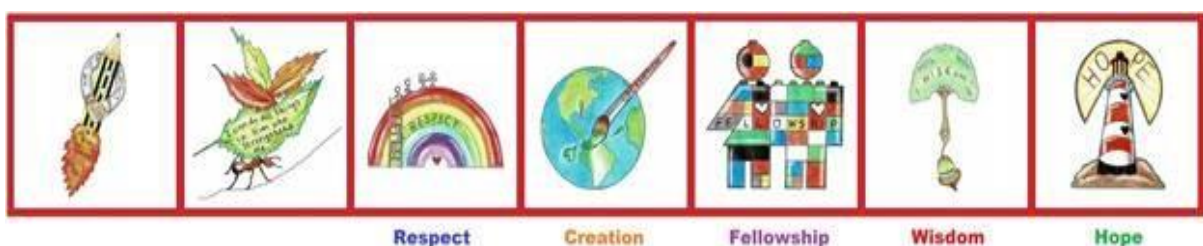
- They have the unique opportunity to make new friendships as well as retain established friendships

Some children can really benefit from a fresh/fresher start as they move into the Juniors. While the Y2 class teachers, and Mrs Giblett, are always happy to meet with Y2 parents to discuss any concerns or requests about children being kept together or separated, we cannot offer any guarantees during the course of the year as to which class your child will be located to. The finalised class lists are shared with the headteacher but she does not seek to influence them because she recognises that:

- She does not interact with the children on a daily basis
- She does not see the slips that are returned by parents
- She is not privy to all the conversations that the class teachers have with parents during the course of the year.

The input of the class teachers is key in the final decision-making as they alone are privy to all the information relating to our 60 Y2 pupils.

We recognise that we will never be able to satisfy all of our Y2 parents and we understand that parents will be concerned primarily about their own child but we do ask them to reflect on the fact that the school has to act in the best interests of all our Y2 pupils. We would never intentionally upset our parents or pupils and we truly regret any upset that this re-alignment might potentially cause but we do know, from our own observations as well as feedback from parents, that our children are very sociable and adaptable and soon make friends in their new classes as well as retaining other friends from their previous class.



## **CHARGING AND REMISSIONS**

### **Introduction**

All education during school hours is free. We do not charge for any activity undertaken as part of the National Curriculum with the exception of swimming, where a voluntary contribution is requested to cover the hire of the swimming pool, instructor and transport costs. *If we do not receive sufficient voluntary contributions, we may cancel transport to the swimming venue or ask parents who have not contributed to transport their children to and from the school.*

### **Aim**

The aim of this policy is to set out what charges will be levied for activities, what remissions will be implemented and the circumstances under which voluntary contributions will be requested from parents.

### **Responsibilities**

The Governing Body of the school are responsible for determining the content of the policy and the Head teacher for implementation. Any determinations with respect to individual parents will be considered jointly by the Head teacher and Governing Body.

### **Publication of Information**

A copy of this policy will be available for parents to view on the school website or from the school office and will be included in the school prospectus identifying what charges are or are not to be made and the activities for which a voluntary contribution will be requested.

### **Charges for Residential Trips**

All residential trips will be optional. If the school organises a residential trip in school time or mainly in school time charges will be levied to cover the full charge of board, lodging and transport plus additional costs for specific activities. If parents are experiencing financial difficulties or if their child/children have Pupil Premium Funding, they are invited to write in confidence to the Head teacher to request help in paying for the trip.

Charges will not be increased to cover the costs of those pupils who are unable to pay.

All residential trips will require a non-refundable deposit.

### **Music Tuition**

All children study music as part of the National Curriculum. We do not charge for this. If however individual or small group tuition is provided by peripatetic teachers a charge will be levied via the Cornwall Music Trust and parents are invoiced direct. The only exception is for recorder lessons when Cornwall Music Trust will invoice the school for a group rate and the school will then invoice the parents direct.

### **Extra Curricular Activities**

Most of our extra-curricular clubs are provided by teachers, free of charge. A contribution will sometimes be requested towards ingredients or materials for certain activities. These charges will be identified in advance. Parents who are experiencing financial hardship are invited to write to the Head teacher. Ability to pay will not be a factor when allocating places. Other extra-curricular clubs that are provided by outside bodies may incur a charge which will be payable direct to the organisation.

## Breakfast Club & After School Clubs

The above facilities are provided by third parties and will be chargeable.

## Lettings

The school is available to hire. Please see the Lettings Policy for further details. The scale of charges is reviewed bi-annually by the Resource Committee.

## Remissions

Any parent who is experiencing financial difficulties is invited to write or speak in confidence to the head teacher. Those in receipt of certain benefits will be entitled to part-funded support. Evidence of benefits will be required.

## Voluntary Contributions

When organising school trips or visits which enrich the curriculum and educational experience of the children, the school invites parents to contribute to the cost of the trip. All contributions are voluntary. If we do not receive sufficient voluntary contributions, we may cancel a trip. If a trip goes ahead, it may include children whose parents have not paid any contribution. We do not treat these children differently from others. Sometimes the school will part-fund trips in order to make them accessible to all. Funding information is available upon request.

The following is a list of activities organized by the school which require voluntary contributions from parents. These activities are known as 'optional extras'. This list is not exhaustive:

Visits to museums  
Outdoor adventure activities  
Visits to the theatre  
Musical events  
Sporting events (transport costs)

## Charges for ingredients, materials and equipment

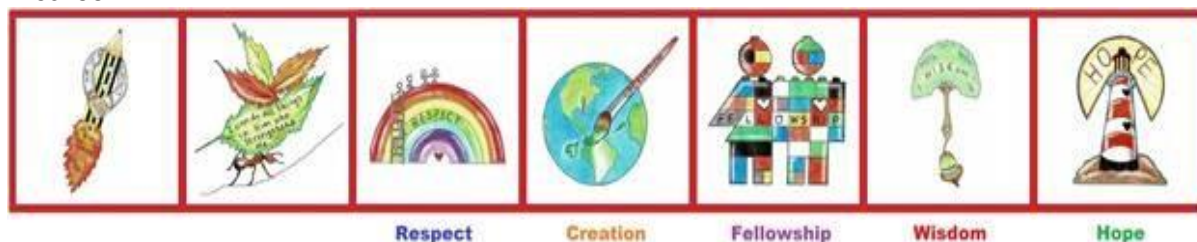
The school will provide any ingredients, materials, equipment needed for the delivery of the curriculum. Parents who are willing to contribute in cash or in kind, will be encouraged to do so on a voluntary basis. The school will charge for or invite parents to supply ingredients, materials and equipment if parents have indicated in advance a wish to own the finished product.

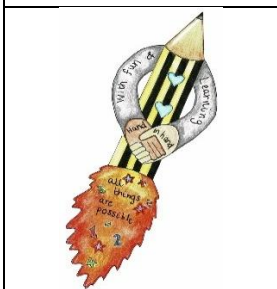
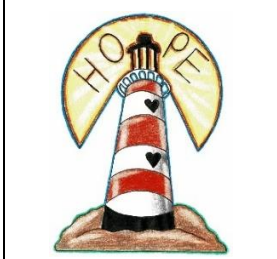
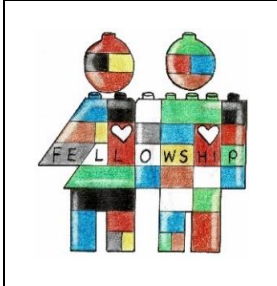
## Charges for breakages/damage

The governors have agreed that parents will be asked to pay for any deliberate damage to property or equipment caused by their child.

## ParentPay

The school is a cashless school and all payments for trips, residentials and some school activities are paid using the ParentPay platform. A login will be provided by the school soon after your child starts in school.





## SCHOOL CONTACT LIST

Bodmin Road, Truro, TR1 1BN

Tel: 01872 273185

E Mail: [officemanager@archbishop-benson.cornwall.sch.uk](mailto:officemanager@archbishop-benson.cornwall.sch.uk)

[secretary@archbishop-benson.cornwall.sch.uk](mailto:secretary@archbishop-benson.cornwall.sch.uk)

[www.archbishop-benson.cornwall.sch.uk](http://www.archbishop-benson.cornwall.sch.uk)

**Headteacher:**

Mrs Helen Giblett

**Deputy Headteacher:**

Mrs Carolyn Power

**Assistant Headteacher:**

Mr David Galler

**Chair of Governors:**

Mrs Mandy Hoare

**Vice Chair:**

Mrs Karen Standen

**Clerk to the Governors:**

Mr Mike Williams

**Welfare Officer:**

Mr David Galler

**Family Support Coordinator:**

Mrs Jill Truen

**Special Educational Needs Co-ordinators:**

Mrs Jo Williams

Mrs Becky Morris

**Office Manager:**

Mrs Michele Law

**Office Staff:**

Mrs Klaren Lang

Mrs Amanda Peckham

**ICT Network Manager:**

Mr Austen Banks

**Finance Manager:**

Mr Alex Smith

**Site Team:**

Mr Treve Sims

Mr Mike Williams







# How we communicate with you!

 Arch Benson

 @ArchBensonSch

## SchoolsBuddy

Book after school clubs, parent's evening appointments and receive communications from the school office, all with just one login.

### Messaging

Using push technology you will receive an alert on your phone showing you have a new message or email.

### Letters-Home

Contacts are able to view all correspondence from the school in one place via the Letters Home tool. There may be attachments to download from here. Check Letters Home regularly for new emails.

### Parents-Evening

The Parents Evening Booking function is an easy way for parents to book appointments with teachers. Once an event has been set, parents can view available appointment slots, select a time and print a schedule.

### Benson-Buddies

Allows you to book a place for your child in our wraparound club for before and after school.

### App

Download the SchoolsBuddy app for smart phones which can help you keep up to date with notices and communications from the school.

SchoolsBuddy Login link below:

<https://archbishopbenon.schoolsbuddy.net/Account/Login>



## ClassDojo

This year the school is using ClassDojo to encourage important skills, like working hard and participating. Teachers can also use it to communicate with you: we can instantly share messages, updates and photos from class. It's the easiest way for you to see how your child is doing at school and to get in touch with the teachers.

### See the story of your child's day

Easily stay connected with your child's classrooms on ClassDojo. You can see all of your child's feedback from teachers, hear important announcements and updates, and see photos and videos from class! You'll also be able to see your child's classwork on their own child's classwork on their own Student Story.

### Any device, any language

Parents can use any iOS device, Android device, Kindle Fire or computer to connect! You can also read all Class Story posts in your preferred language instantly.



### Safe for all

All of your child's information is kept safe on ClassDojo. Only they, their teachers, and you as their parents can see their information.

ClassDojo is COPPA-compliant and fully support FERPA.

Your child's teacher will need to invite you to join their class. They will invite you by sending home a parent code.

To find out more information please visit: [www.classdojo.com](http://www.classdojo.com)



## ParentPay

Using a secure website called ParentPay you will be able to pay online using your credit or debit card. ParentPay will be our preferred method of making payments to school.

### What are the benefits to parents and pupils?

- ParentPay is easy-to-use and will offer you the freedom to make online payments whenever and wherever you like, 24/7
- The technology used is of the highest internet security available ensuring that your money will reach school safely – offering you peace of mind
- Payments can be made by credit/debit card or also through PayPoint
- Full payment histories and statements are available to you securely online at anytime
- Your children will not have to worry about losing money at school
- Booking and Paying of School Dinners

Please click on link below for more information/login:

[www.parentpay.com](http://www.parentpay.com)

Mon 29 Jan	Tue 30 Jan	Wed 31 Jan	Thu 1 Feb	Fri 2 Feb
Chicken (v)	Tomato Soup (v)	Spiced Lentil Soup (v)	Chicken Soup	Muesli Soup (v)
Corish Beef Leauge Mixed Cornish Leaf Saiol & Potocore	Creany Chicken Pie Mashed Pototo & Seasonal vegetables	Roast Topside of Beef with Truffle Pudding Roast Potatoes and Seasoning	Vegetable Curry with Homemade Vegetable Sauce & Basmati Rice	Roasted Cut Chips & Peas
Winter Vegetable Mashed Cornish Leaf (v) & Potocore	Vegetarian Crumble Mashed Pototo & Seasonal Vegetables	Cherry Puff Pastry Vegetable Wheels Roast Potatoes & Seasonal Vegetables	Chips Served Pototo with Beans & Cheese	Roasted Free Range Egg Chips & Peas
Treadle Sponge with Custard	Rasperry Ripple Cheesecake	Hot Chocolate Pudding with Whipped Cream	Seasonal Leaf with Live Caramel Natural Yoghurt	Playback

Please turnover page for popular questions asked by parents.



# Q & A



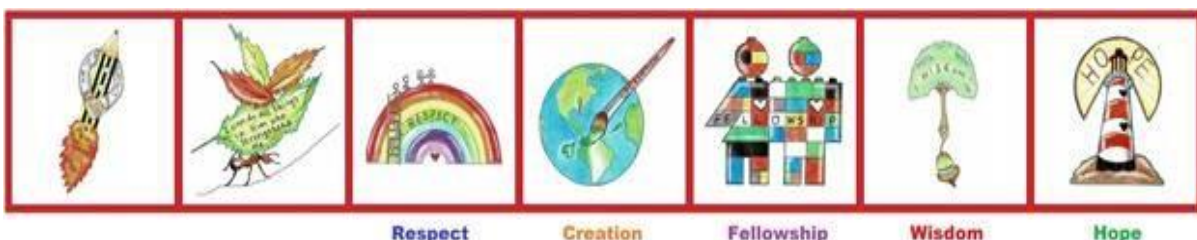
Arch Benson



@ArchBensonSch

Please find below popular questions asked by parents and where you can find the answers:

How can I pay for lunches, uniforms & trips?	ParentPay
How can I book up parent evening appointments and clubs for my child?	SchoolsBuddy
How can I find out about my child's learning and communicate with their class teacher?	ClassDojo
Where should I go to find out about the latest school news any daily messages?	Twitter/Facebook ClassDojo and Newsletter
Where can I go to find letters & documents sent out by the school?	Parent Section on School Website and SchoolsBuddy
Where can I go to find out about aspects of school life like policies, curriculum & assessment information?	School Website
How do I let my class teacher know about urgent information about my child e.g. not feeling well before school, going home with a different parent	ClassDojo
How do I find out about FABB (school PTA) events?	Newsletter, Twitter and School Website
How do I report non planned absence e.g. sickness	Class Dojo or School Office
How do I access Absent Request Form?	Parent Area on School Website or School Office
How do I order school uniform?	Uniform Shop on School Website under Parent Info
How do I find out about the Governors of the School?	Governors area on School Website



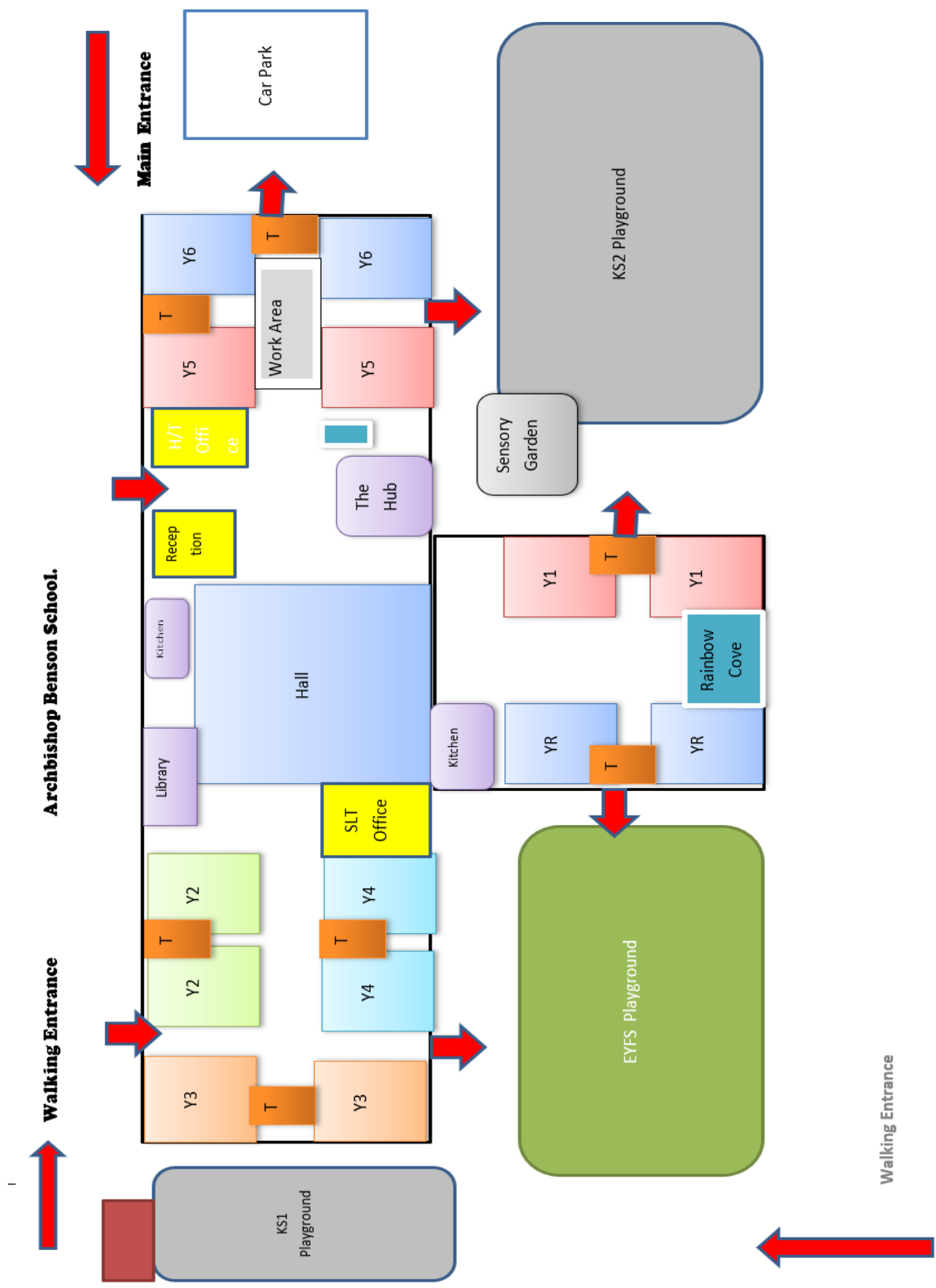
Respect

Creation

Fellowship

Wisdom

Hope





Plastic Free Menu Design by Holly, Class 2kp

Welcome to Archbishop Benson's Summer menu 2020. Our team in the kitchen- George, Korrine, Sally & Karen - hope you will enjoy eating with us as much as we enjoy preparing and serving your food. Please see one of us for dietary requirement advice.

WE HAVE FRESH FRUIT, MILK, SALAD & HOMEMADE BREAD AVAILABLE EVERY DAY ☆

MONDAY	TUESDAY	WEDNESDAY	THURSDAY	FRIDAY
Asparagus Soup (v)	Tomato Soup (v)	Carrot & Cumin Soup (v)	Tomato & Roasted Red Pepper Soup (v)	Thai Seed Ramen Noodles
ComLuk Slagarygy Flak Pie	Carbonara Pasta Bake	Lemon & Herb Roast Turkey with Gravy	Vegetable & Chickpea Curry	Crispy Chicken Filled Gyojans
Cheese & Onion Pasty	Vegetable Carbonara Pasta Bake	Frittata with Roast Tomato Sauce	Baked Potato with Cheese & Beans	Breaded Vegetarian Bake
Mashed Potato, Garden Peas	Mixed Salads, & Focaccia	Roast Potatoes & Vegetables	Steamed Rice Peas & Sweetcorn	Chips & Peas
Homemade Scones with Jam & Clotted Cream	Ice Cream with Mixed Summer Berries	Homemade Flapjack	Treacle Sponge with Custard	Blueberry Muffin

MONDAY	TUESDAY	WEDNESDAY	THURSDAY	FRIDAY
Tomato & Lentil Soup (v)	Roast Butternut Squash Soup (v)	Carrot & Coriander Soup (v)	Chicken Soup	Spring Vegetable Soup (v)
Chittington's Sausage	Spaghetti Bolognese	Honey Roast Ham with Gravy	Moroccan Vegetable Tagine	Buttered Cook
Vegetarian Sausages	Quorn Bolognese	Summer Vegetable Tart-Tatin	Baked Potato with Cheese & Beans	Poached Free Range Eggs
Mashed Potato Seasonal Vegetables & Gravy	Mixed Salads, Cheese & Focaccia	Roast Potato with Steamed Vegetables	Steamed Rice, Peas & Sweetcorn	Chips & Garden Peas
Sticky Toffee Pudding with Custard	Fruit Yogurt	Homemade Shortbread	Summer Berry Pavlova	Chocolate Critiques

MONDAY	TUESDAY	WEDNESDAY	THURSDAY	FRIDAY
Cream of Tomato Soup (v)	Chicken & Vegetable Soup (v)	Spring Vegetable Soup (v)	Tomato Soup (v)	Leek & Potato Soup (v)
Shepherd's Pie	Roast Vegetable & Cheese Pasta Bake	Roast Pork with Crackling & Gravy	Jacked Potatoes, with Beans & Cheese	Homemade Pizzas - Salami or Tomato & Mozzarella
Quorn Mince Pie	Cured Meats Mixed Salads & Focaccia	Cheddar & Leek Quiche	Mexican Vegetable Bean & Cheese Burrito with Salad	Chips, Peas & Sweetcorn
Seasonal Vegetables	Peach Melba	Homemade Ginger Biscuit	Key Lime Pie	Banana Bread

## SCHOOL UNIFORM OVERVIEW

Please order your school uniform on the website: [www.archbishop-benson.cornwall.sch.uk](http://www.archbishop-benson.cornwall.sch.uk) click on parent info/uniform shop.

At Archbishop Benson Primary School, staff and children pride themselves on looking smart and ready to work. We expect our children to wear the agreed uniform:

Girls' winter uniform	Boys' winter uniform
<ul style="list-style-type: none"> <li>• Tartan skirt or grey school trousers</li> <li>• Grey school jumper with school logo</li> <li>• From Reception to Y2 - red polo-shirt with school logo</li> <li>• From Y3 – Y6 - white shirts (may be short-sleeved)</li> <li>• School tie is worn in the winter (Y3 – Y6)</li> <li>• Red tights or white/grey socks</li> <li>• Black shoes (no boots, heels, trainers or open-toed footwear)</li> </ul>	<ul style="list-style-type: none"> <li>• Grey shorts or grey trousers</li> <li>• Grey school jumper with logo</li> <li>• From Reception to Y2 – red polo-shirt with school logo</li> <li>• From Y3 – Y6 - white shirts (may be short-sleeved)</li> <li>• School tie is worn in the winter (Y3 – Y6)</li> <li>• Grey socks</li> <li>• Black shoes (no trainers or open-toed footwear)</li> </ul>
Girls' summer uniform	Boy' summer uniform
<ul style="list-style-type: none"> <li>• Tartan skirt or grey school trousers</li> <li>• Grey jumper with school logo</li> <li>• From Reception to Y2 – red polo-shirt with school logo</li> <li>• From Y3 – Y6 - white shirts (may be short-sleeved)</li> <li>• School tie (Ties need not be worn from after May half-term until October half-term unless request is made by school to wear them for a specific occasion)</li> <li>• Red striped dress (optional)</li> <li>• White/grey socks with trousers or skirt</li> <li>• White socks with summer dress (tights are not to be worn with the summer dress)</li> <li>• Black shoes (no heels, trainers or open-toed footwear)</li> </ul>	<ul style="list-style-type: none"> <li>• Grey shorts or grey trousers</li> <li>• Grey school jumper with logo</li> <li>• From Reception to Y2 – red polo-shirt with school logo</li> <li>• From Y3 – Y6 - white shirts (may be short-sleeved)</li> <li>• School tie ((Ties need not be worn from after May half-term until October half-term unless request is made by school to wear them for a specific occasion)</li> <li>• Grey or black socks</li> <li>• Black shoes (no trainers or open-toed footwear)</li> </ul>

As part of Ofsted's safeguarding requirements, all our children must bring a hat/cap to school in the Summer term as they will be outside in direct sunlight for most of lunchtime. Caps can be purchased through the school office. Children may wear a hat from home.

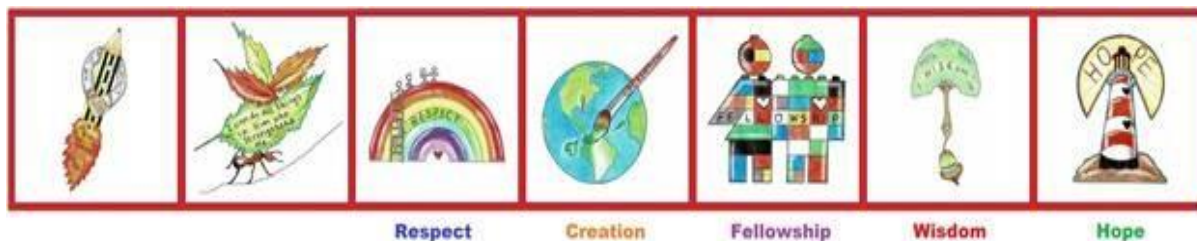
PE Kit	
<ul style="list-style-type: none"> <li>• Black Shorts,</li> <li>• Red T-shirt with school logo</li> </ul> <p><b>For field games</b> during the winter months e.g. November - March (Y3 – 6 only)</p> <ul style="list-style-type: none"> <li>• Black tracksuit bottoms/leggings</li> <li>• Red hoody with school logo</li> <li>• Training shoes</li> </ul>	<p><b>These items of uniform remain optional in terms of where they can be bought by parents but the school uniform shop will sell high quality items at very competitive prices</b></p> <ul style="list-style-type: none"> <li>• Book bag</li> <li>• PE Bag</li> </ul>

Indoor P.E. is done barefoot but Junior children will be expected to wear trainers (from home) for outdoor sessions. Once the weather changes in the Autumn term, all Junior children will need to be ready to wear their Winter P.E. kit. Infant children do not need to purchase a pair of plimsolls. If footwear is needed, KS1 teachers will notify parents to send trainers into school. Because our Infant children do more indoor P.E., we do not expect Infant parents to purchase a Winter P.E. kit. Teachers will contact Infant parents, as and when it may be necessary, for the children to bring warmer P.E. kit from home into school.

<ul style="list-style-type: none"> <li>• Earrings and jewellery are unsuitable and unsafe for school wear and should not be worn. However, we do allow pupils to wear one stud in each ear.</li> <li>• Similarly, hair should be of a natural colour and worn in a conventional style.</li> <li>• All hair that can be tied back, should be tied back every day</li> <li>• Nail varnish or tattoos are not permitted.</li> </ul>
--

## School Uniform Price list

Item Description	Price per item	Item Description	Price per item
Skirt 23" waist 12" Length (3-4)	£18.00	PE T Shirt (3-4 Years)	£4.00
Skirt 24" Wait 14" Length (5-6)	£18.00	PE T Shirt (5-6 years)	£4.00
Skirt 26" Wait 16" Length (7-8)	£18.00	PE T shirt (7-8 years)	£4.00
Skirt 28" Waist 18" Length (9-10)	£18.00	PE T Shirt (9 -10 years)	£4.00
Skirt 30" Waist 20" Length (11)	£18.00	PE T shirt (11 years)	£4.00
Jumper (3-4 Years) 24"	£11.00	Summer Dress (3-4 Years)	£10.50
Jumper (5-6 years) 26"	£11.00	Summer Dress (5-6 years)	£10.50
Jumper (7-8 years) 28"	£11.00	Summer dress (7-8 years)	£10.50
Jumper (9-10 years) 30"	£11.00	Summer dress (9-10 years)	£10.50
Jumper (11 years) 32"	£11.00	Summer dress (11 years)	£10.50
Red polo shirt (3-4 years)	£5.00	<b>Key Stage 2 only</b>	
Red polo shirt (4-5 years)	£5.00	PE Hoodie (7-8 years)	£12.00
Red polo shirt (5-6 years)	£5.00	PE Hoodie (9-10 years)	£12.00
Red polo shirt (7-8 years)	£5.00	PE Hoodie (11 years)	£12.00
<b>Optional Items</b>			
Book Bag	£4.50	Ties (45")	£3.00
PE Bag (Small)/(Large)	£3.50/£4.50	Ties (52")	£3.50
Cap	£3.50		



## Welcome to Benson Buddies Wraparound Club

The club is for children aged 4-11 years, it operates a before school and after school club,.

The Breakfast Club runs from 7.30am to 8.30am and breakfast is included in the fees. Staff will accompany the children to school and see them safely into their classroom.

The Afterschool Club runs from 3.15pm to 6.00pm, the children are collected from their classrooms and brought across to the setting. The children have registration and are then given snacks and drinks. A range of activities are available throughout the session and these are taken from the children's interests and ideas. Children who attend afterschool clubs can access the club afterwards.

Our main aim is to provide High Quality care for your child and to ensure they have lots of fun and enjoy their time at Wraparound.

Staff are always open to new ideas and welcome input from parents. Please feel free to speak with staff at any time regarding your child as they will be only too happy to help.

The aim of our club is to provide a secure and caring environment for your children. We are registered for children from the age of 4-11 years. Whilst at wraparound your child will be able to become involved in the following activities:-

- Outdoor sports
- Organised activities
- Crafts
- Construction games
- Board games
- Junk modeling
- Cookery and lots more

We involve the children each week in planning our activities and work very hard to ensure that we listen to them and meet all their needs. We value and respect your children and encourage them to contribute to the club.

### Snack Time

At breakfast club the children can choose from a wide selection of healthy choices all overseen by our school chef. We do try and encourage the children to eat healthily and try new foods.

In the late afternoon we offer again a varied choice through the week and these include dishes such as fresh fruit, crackers and cheese, pasta etc. If your child has any allergies then please do let us know to ensure that we can offer them an alternative snack.

## TIMES & PRICES

### Breakfast Club

7.30am—8.30am.....£4.50

(Includes breakfast)

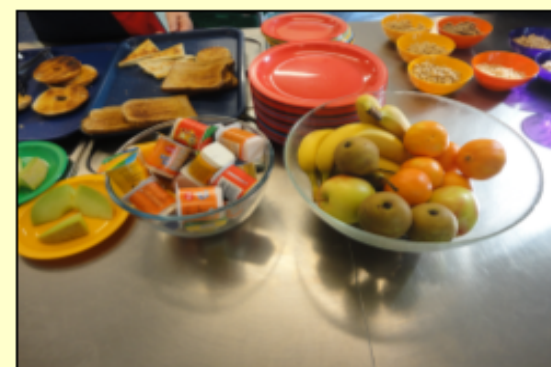
### After School Club

(Includes a snack)

3.15pm—4.00pm.....£4.00

4.00pm—5.15pm.....£5.00

5.15pm—6.00pm.....£3.00



## Why choose our Wraparound Club

- Highly qualified team of staff
- Excellent premises on a secure school site
- Continuity of care for your child on one safe site
- Fun and innovative activities on offer every day
- We aim to meet all the needs of you and your child
- Fun packed half term programs
- Advice given to claim tax credits towards child care costs
- Our location means we can collect your child from after school clubs



## Booking

Breakfast and after school wraparound can be booked using our current booking system: **SchoolsBuddy**

Using the **SchoolsBuddy App** on your phone or the **SchoolsBuddy website**:  
[archbishopbenon.schoolsbuddy.net](http://archbishopbenon.schoolsbuddy.net)

Bookings will need to be made at least 48 hours in advance and the App is now open for you to book.

Immediate payment will be required when making the booking.

If you require an emergency booking on the day you must call the school directly.

Childcare vouchers are accepted for Benson Buddies Wraparound Club only, on agreement with the school.



Please come in and have a chat with us...

T: 01872 273185  
E: [bensonbuddies@archbishop-benson.cornwall.sch.uk](mailto:bensonbuddies@archbishop-benson.cornwall.sch.uk)  
[www.archbishop-benson.cornwall.sch.uk](http://www.archbishop-benson.cornwall.sch.uk)



**Benson Buddies**  
Wraparound





## **Hello and Welcome from Archbishop Benson's PTA**

### **Who are we?**

FABB (The Friends of Archbishop Benson) are a group of Group parents, staff, governors and friends who support the school by working together to make the children's time at ABB best it can be.

### **What do we do?**

We work closely with the school to arrange a number of fundraising events throughout the year which enable the school to pay for equipment, resources, activities, and experiences that could not be afforded through the main school budget. Some of our many fundraising events include Christmas and Summer Fairs, a Mothers' Day Coffee Morning and Discos.

As well as fundraising, we also, where possible, offer support at other school events where we may be making teas and coffees, running raffles or supporting in other ways.

### **How can I help?**

There are lots of things that you could do to be involved and support us:

- \* Help at events by manning stalls, setting up, selling tickets etc.
- \* Volunteering to be a class rep.
- \* Making teas and coffees.
- \* Attending meetings and passing on information.
- \* Sending in donations such as raffle prizes etc.
- \* Bringing friends and family to events.

### **Contact FABB**

We are keen to hear from you with any comments, suggestions and ideas. If you would like to find out more about what we do or get involved in FABB, then please get in touch with us via email: [pta.fabb@gmail.com](mailto:pta.fabb@gmail.com)

It's a great way to be part of school life!

# Working together to support our children



Hello Everyone

My name is Emma and I have the privilege of being the current chairperson of the school PTA known as the Friends of Archbishop Benson or "FABB". I would like to welcome you whether this is your first child starting at this school or you are already one of our school families returning with a younger sibling.

FABB is a group of parents, staff, governors and friends who support the school by working together to make the children's time at Archbishop Benson the best it can be.

What this usually looks like varies widely, from providing tea and coffee at events, organising events such as our Christmas fair and providing equipment, resources, activities and experiences such as the book bags, water bottles, treats at Christmas and also in the summer. Our larger projects have included play equipment for the KS1 playground, an outdoor area for Year 1, a playpod for KS2, audio-visual equipment for the hall and a reading cabin for the KS2 playground. Our current project is the accelerated reader programme. I have included some information about the kinds of activities we get involved with.

As a parent, you are automatically a member of FABB. It is a great way to get involved and meet people. It is also good fun. If you would like us to keep you up to date with what's happening please send your name and a mobile number to [pta.fabb@gmail.com](mailto:pta.fabb@gmail.com).

One of the specific ways you could get involved is by becoming a class rep. Each year group has one or two of these and they assist us by organising helpers for our big events such as the Summer and Christmas fairs and generally being a contact point for your class/year group. Most years groups also set-up their own closed Facebook group, which is another useful way to get messages out and keep everyone in the loop. If that is something you think you could help us with then please send an email to [pta.fabb@gmail.com](mailto:pta.fabb@gmail.com).

As well as myself, there are three others who make up the FABB core team; our vice-chairperson is Karen, our secretary is Hannah and our treasurer is Irina.

Although we do not yet know when or if we will be able to hold meetings and events in the usual way during the next academic year, we are keen to continue to support the school in whatever ways we can and looking forward to you being part of that.

Many thanks

**Emma**

---

[pta.fabb@gmail.com](mailto:pta.fabb@gmail.com)

Registered Charity: 1131879

Working together to support our children



Parentkind  
Member Association



## WE NEED YOU.

### Who are we?

FABB (The Friends of Archbishop Benson) are a group of parents, staff, governors and friends who work together to support the school. Everyone is welcome help!

We aim to provide opportunities to enrich our children's educational experience and make their time at Archbishop Benson the very best it can be through fundraising and supporting at events!

### What have we helped to provide?

Here are just a selection of things that we have enabled the school to purchase over recent years.

If you fancy helping or want to find out more, please speak to any of the people on the list of core team or class reps or send an email to us at [pta.fabb@gmail.com](mailto:pta.fabb@gmail.com)



The year one outdoor covered area



The Scrapstore Playpod.

All the audio and visual equipment in the hall.



Book bags and water bottles