

# TOPIC OVERVIEW



Year Group: 3

Term: Autumn 1

Key Question: What clues did prehistoric people leave behind?

## Creative:

Dance lessons  
Stone Age cave art  
Stonehenge constructions  
Christmas story for Moving Books - DT



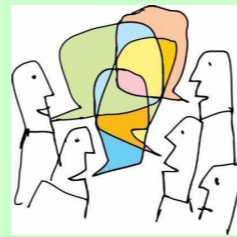
## Healthy:

Be Active breaks  
Dance lessons  
Foraging  
Den building



## Active:

Oracy R.E.  
Library Trip



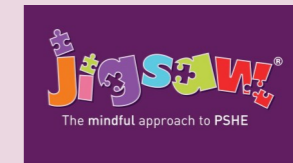
## Inspiring:

Truro Museum Loan box  
Wow Day - Stone Age  
Black History Month  
Truro Library



## Nurturing:

Links to RE  
PSHE—Being Me in my world  
Peer to peer massage  
Jigsaw  
Black History Month



## Writing

### Key Texts:

A Trip to the Museum—Portal Tale  
Woolly Mammoth—Non-chronological report

Spelling, punctuation and Grammar

## Maths:

Place Value  
Addition & Subtraction

## Reading:

### Class Novel:



### Key Texts:

The BFG, How to wash a Woolly Mammoth, Stone Age Boy, Stonehenge

Focus: VIPERS skills

## Geography:

### Europe

Equator and hemispheres  
Countries of Europe, identifying and comparing features including hills and mountains.  
Use maps, atlases and globes.  
Name, locate countries, cities, regions of UK, identifying human and physical features.  
Use 8 points of compass, 4 figure grid references.  
Name and locate equator and norther, southern hemisphere.

## History

Stone Age, Bronze Age, Iron Age  
What clues did prehistoric people leave behind?  
Compare era with others.  
Use concept of change  
Suggest causes and consequences of the main events that changed history.  
Place events on a timeline.  
Use evidence to ask questions.

## Art & Design

Be inspired by Andy Warhol pop art  
Make and use a block to print  
Build a picture in layers using colours.  
Make a printed repeated pattern design and press print

## Computing

Data and information—branching databases  
Yes/no questions  
Create, structure and use a branching database.  
Science  
Nutrition in animals including humans  
Skeletons—muscles for support, protection and movement.  
Identify similarities and differences.  
Ask questions.

## R.E.

What do Christians learn from the Creation Story?  
Make suggestions about how stories influence human nature.

## PE

Real Dance —Unit 1—Personal Skills  
Footwork  
Mirroring & Matching  
Balance  
Partner Work

## PSHE

Jigsaw PSHE—Being Me in My World  
Setting personal goals, self identity and worth, positivity in challenges, rules, rights and responsibilities, responsible choices, seeing things from other's perspectives